

本目录产品外观、规格如有改动，恕不另行通知，请以实物为准！
This product appearance, specifications are subject to change,
Without notice, refer to the actual product!

BAOYU[®]

宝宇模板机
BAOYU TEMPLATE MACHINE

用技术创造价值
CREATE VALUE
WITH TECHNOLOGY

浙江宝宇缝纫机股份有限公司
ZHEJIANG BAOYU SEWING MACHINE CO.,LTD.

中国浙江省台州市椒江区经中路2299#
No.2299, Jingzhong Road, Jiaojiang,
Taizhou, Zhejiang, China. P.318000



T. 0086-576-88159688 F. 0086-576-88159666
E. baoyu@chinabaoyu.com
www.chinabaoyu.com

双王模板机缔造者
Twin-King Technologies Pioneer Template Machine

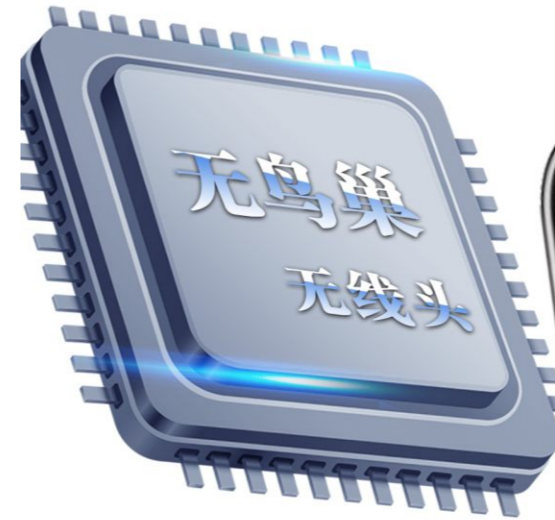
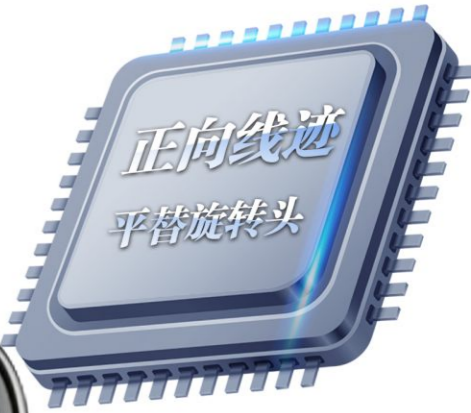
为你，
更懂你.....

For You,
Know You Better.....

双王

Double king Template Machine

模板机



提效 50%

让企业主满意 - 高性价比

Satisfying Business Owners – High Cost-Effectiveness

让管理者满意-简化服装生产工艺

Satisfying Managers – Streamlining Apparel Production

让使用者满意-操作方便

Satisfying Operators – User-Friendly Operation

让售后满意-维护简单

Satisfying After-Sales – Simplified Maintenance

降本 **¥20000/年**

www.chinabaoyu.com

BAOYU[®]

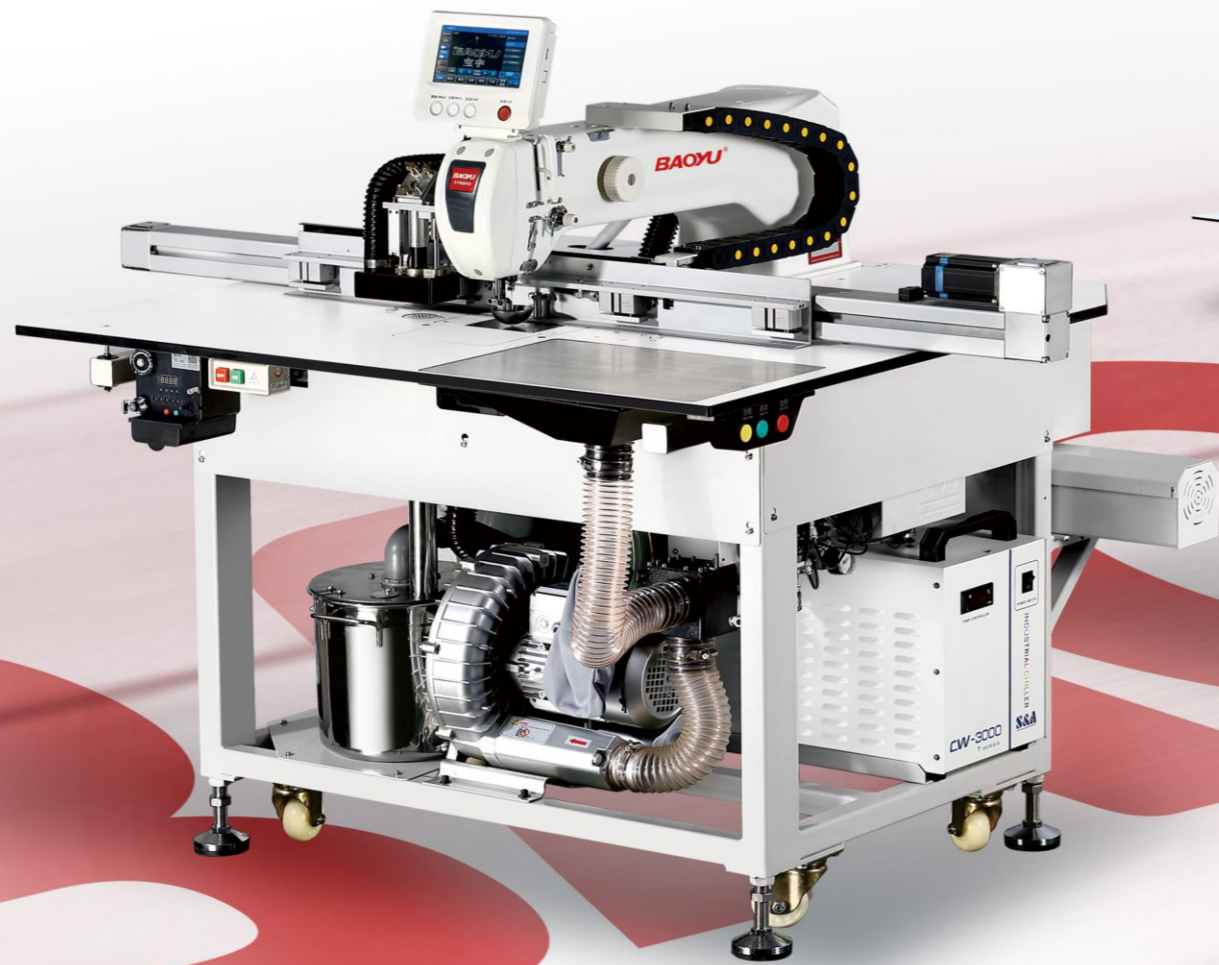
控线精灵
THREAD TECH

引领行业
LEADING THE INDUSTRY

双王

模板机

Double king Template Machine



为你，
更懂你.....

For You,
Know You Better.....

www.chinabaoyu.com

About baoyu

关于宝宇.....

BAOYU专业生产工业缝纫机，100多个产品畅销中国、欧美、非洲、东南亚等世界各地，并在中国内陆地区成功推出4S品牌专卖店及4S售后服务点。

BAOYU在中国浙江台州投资并建成专业缝制设备生产基地。以标准化、规模化、国际化的设备、工艺和管理，确保产品供应规模及产品品质，搭建BAOYU与全球客户稳定的战略合作伙伴关系。

传承“百年品质、百年企业”的经营梦想，BAOYU以做精、做强、做大的专注精神，为优质客户提供专业缝制设备及高性价比价值！

BAOYU specializes in manufacturing industrial sewing machines, with more than 100 products selling well in China, Europe, America, Africa, Southeast Asia and other parts of the world, and has successfully launched 4S brand stores and 4S after-sales service points in China's inland areas.

BAOYU has invested and built a professional sewing equipment production base in Taizhou, Zhejiang, China. With standardized, large-scale and internationalized equipment, technology and management, we can ensure product supply and product quality, and build a stable strategic partnership between BAOYU and global customers. we focus great attention on the spirit as "to be better, stronger and larger" and try to supply professional sewing equipment and cost-effective value for customers.





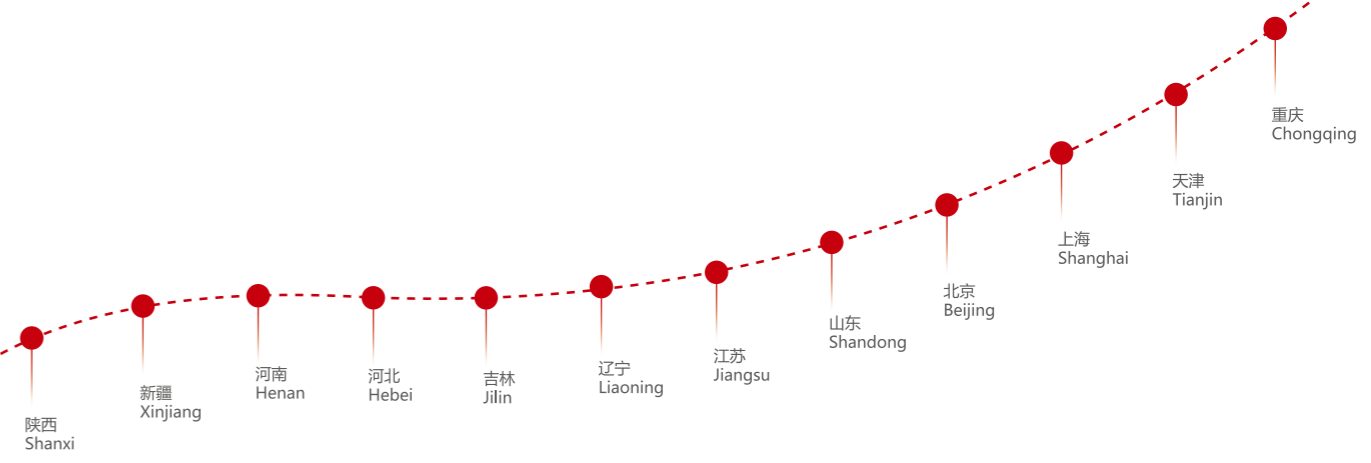
Marketing global

营销全球.....

在全球化的市场环境下，“宝宇”坚持走品牌发展之路，积极拓展国际市场，为企业建立国际竞争优势。

BAOYU全程标准化服务涵盖售前、售中、售后。

BAOYU凭借专注稳定的经典品质，成功携手几百家战略合作伙伴，成为各大服装企业、样板工厂的品质之选。



In the globalized market environment, BAOYU adheres to the road of brand development, and actively expand the international market, to establish an international competitive advantage for enterprises.

BAOYU standardized service covers pre-sales, sales and after-sales.

BAOYU by virtue of focusing on high quality,

BAOYU has successfully built good relationship with hundreds of strategic partners and become the choice of major garment enterprises and sample factories by virtue of its dedicated and stable classic quality.



双王模板机缔造者

Twin-King Technologies Pioneer Template Machine

营销、传播、成长.....

Technology, professional, focus





拥有100多项发明专利/实用新型专利
It has more than 100 invention patents

参与各项工业用缝纫机国家标准、行业标准起草
Participated in the drafting of national and industry standards for industrial sewing machines.

GBT 30407-2013 工业用缝纫机 计算机控制系统通用技术条件的国家标准起草
Participated in drafting the national standard GB/T 30407-2013 Industrial Sewing Machines – General Technical Requirements for Computer Control Systems.

GBT 5226.31-2017 机械安全 机械电气设备 第31部分缝纫机、缝制单元和缝制系统的特殊安全和EMC要求的国家标准起草
Participated in drafting the national standard GB/T 5226.31-2017 Safety of Machinery – Electrical Equipment of Machines – Part 31: Particular Safety and EMC Requirements for Sewing Machines, Sewing Units, and Sewing Systems (aligned with IEC 60204-31).

QBT 5328-2018 工业用缝纫机计算机控制带模板缝纫机的行业标准起草机
Participated in drafting the industry standard QB/T 5328-2018 Industrial Sewing Machines – Computer-Controlled Template Sewing Machines.

QBT 5331-2018 工业用缝纫机计算机控制桥式带模板缝纫机的行业标准起草
Participated in drafting the industry standard QB/T 5331-2018 Industrial Sewing Machines – Computer-Controlled Gantry-Type Template Sewing Machines.

T5723-2022工业用缝纫机 计算机控制机头旋转带模板缝纫机的行业标准起草机
Participated in the drafting of the industry standard for T5723-2022 Computer-Controlled Head Rotating Belt Template Sewing Machine for Industrial Use

TCSMA 010-2022质量分级及“领跑者”评价要求 计算机控制带模板缝纫机的团体标准主起草单位
Served as primary drafting unit for the group standard T/CSMA 010-2022 Quality Grading and "Forerunner" Assessment Requirements – Computer-Controlled Template Sewing Machines.



WORLD'S FIRST ONLY ONE IN THE INDUSTRY

独家技术

正向线迹 无鸟巢模板机
Forward Stitch
Anti bird nest Template Machine



GT-K5 W-37 80 GET J I H / D

型号
Model

- K**: 正向线迹
Forward stitches
- M**: 智能模板机
Smart Template Machine
- N**: 智能旋转头
Smart Rotating Head

无鸟巢
No Bird's Nest

Y缝制范围
Y-sewing range
37: 370mm
105: 990mm

X缝制范围
X-sewing range
80: 80mm
100: 1000mm

系列
Series

- 5**: 线内模板机
In-line Template Machine
- 6**: 工艺模板机
Process Template Machine
- 9**: 绗线模板机
Quilting Template Machine
- 10**: 大行程模板机
Large Stroke Template Machine

压脚 Presser foot
E: 电机压脚
Motor Presser Foot
M: 机械压脚
Presser Foot

激光 Laser
J: 130W激光
j: 110W激光
C: 震动刀

厚料
Thick material

模组 Module
T: 同步带模组
Synchronous Belt Module
S: 丝杆模组
Lead Screw Module

旋梭
Rotating shuttle
G: 进口旋梭
Imported Bobbin Case
Y: 国产旋梭
Domestic Rotary

配套电控
Matching electronic control system

D: 大豪 DAHAO
X: 星火 XINGHUO
Q: 琦星 QIXING

宝宇品牌代码
Baoyu brand code

控线精灵 I THREAD TECH

让线迹不再逆行
No Reverse Stitch

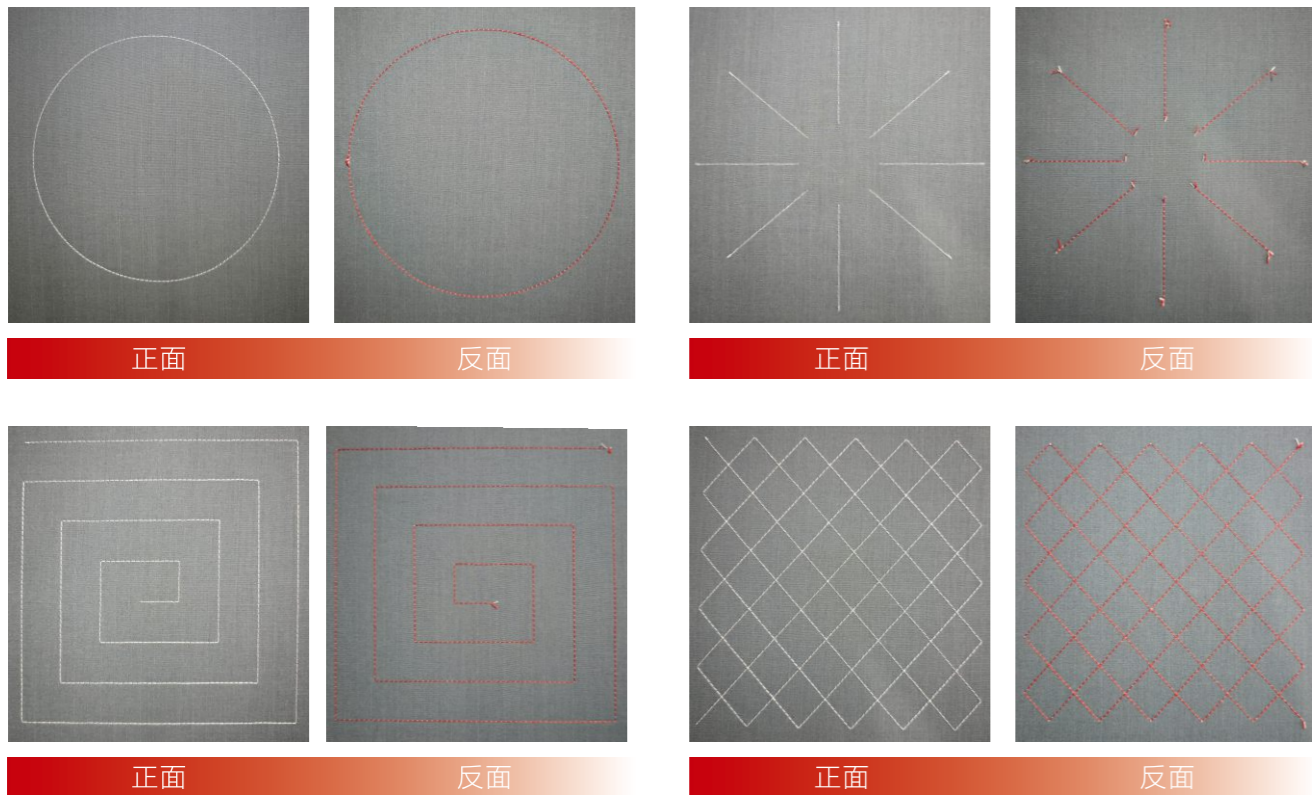
控线防巢黑科技
Thread Control & Anti-Bird's Nest Tech

逆线转正新秩序
Reverse-to-Forward Stitch: A New Paradigm

搭载AI动态轨迹算法，实时解析缝纫路径，精准捕捉面料的多维性，通过AI动态轨迹算法，确保线迹终沿最优路径正向推进
Equipped with AI dynamic trajectory algorithm, it can analyze the sewing path in real time. Precisely capture the multi-dimensionality of the fabric, and through the AI dynamic trajectory algorithm, ensure that the stitch always advances along the optimal path in the forward direction.

基于1000000组缝料数据库的AI模型，提前预防鸟巢风险
An AI model based on a database of 1,000,000 sets of sewing materials, to prevent bird's nest risks in advance.

控线精灵 I THREAD TECH



GT-K5W

无鸟巢模板机—解决您剪线烦恼
Bird's Nest-Free Template Machine: Eliminates thread trimming hassles, boosts efficiency by 35%, and saves ¥20,000 annually.

正向线迹 代替旋转头
Forward Stitch Template Machine: Replaces rotating heads.

50%
提升效率

20000元
一年节省



激光: 110W加大激光功率，切割速度更快，切缝更细。
Laser: 110W enhanced laser power for faster cutting speed and finer kerf

吸风: 1500W风机功率300X450吸风面积，适应各种面料、工艺。
Suction: 1500W motor power, 300x450mm suction area, adaptable to various fabrics and processes.

震动刀: 适用于不能用激光切割的工艺。
Oscillating Knife: Ideal for applications where laser cutting is not suitable

性能参数		TECHNICAL DATA										
机型 Machine type	缝制范围 Sewing Range	最高转速 Max Speed	针距 Needle gauge	机针 Machine needle	旋梭 Hook	气压 Pressure	抬压脚高度 Foot lifting height	Y送料方式 Y feeding mode	X送料方式 X feeding mode	台板展开尺寸 Table open size	包装尺寸 Package size	净重 net weight
GT-K5W-3780	370X800mm	3600	0.1-20	DPX5 7-24#	2倍梭	0.4-0.6Mpa	20	同步带	同步带	1100X1200	1320X1150X1320 加100W激光长1470	248
GT-K5W-37100	370X1000mm	3600	0.1-20	DPX5 7-24#	2倍梭	0.4-0.6Mpa	20	同步带	同步带	1100X1200	1320X1150X1320 加100W激光长1470	248

BAOYU®

专利产品 仿冒必究
Patented Product - Legal Action Against Imitation

Forward Stitch
Replacing
Rotary
Head

正向线迹 代替旋转头
Forward Stitch, Replacing Rotary Head



GT-K9W

无鸟巢模板机
Anti Bird Nest Template Machine

新款 NEW



拖链: 内展式拖链, 不占用台板外空间, 提高场地利用效率和人员安全性。

Drag Chain: Internal expansion design, freeing up external table space. Enhances workspace efficiency and operator safety.



F板: 隐藏式气路设计, 降低漏气风险, 提高美观度

F-Platen: Concealed pneumatic circuit design, reduces air leakage risks and improves



推拉翻板: 提高人员操作舒适性, 降低疲劳。

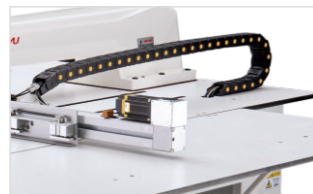
Flip & Slide Plate: Ergonomic operation, reduces operator fatigue.



侧放电控: 方便售后维护、提高效率

Side-Mounted Electronic Control: Facilitates after-sales maintenance and improves operational efficiency.

旧款 OLD



吸风: 1500W风机功率, 300X500吸风面积, 适应各种面料、工艺。

Suction: 1500W motor power, 300x500mm suction area, adaptable to various fabrics and processes.



震动刀: 适用于不能用激光切割的工艺。

Oscillating Knife: Ideal for applications where laser cutting is not suitable



激光: 130W大功率激光, 切割速度更快, 配备自冷却防变色系统

Laser: 130W high-power laser, with faster cutting speed and equipped with self-cooling anti-color-changing system



控线精灵系统:

精准捕捉面料的多维特性, 毫秒级动态校准缝制参数, 自动生成最优针距、线张力及走针轨迹, 有效解决逆缝方向线迹各种问题。

Thread Control Wizard System

Precisely captures multi-dimensional fabric properties; performs millisecond-level dynamic calibration of stitching parameters; automatically generates optimal stitch length, thread tension, and needle feed path. Effectively resolves all types of reverse stitching direction thread issues.

无鸟巢模板机: 解决您剪线烦恼, 效率提升50%, 每年节省20000元。

Bird's Nest-Free Template Machine: Eliminates thread trimming hassles, boosts efficiency by 18%, and saves ¥10,000 annually.

性能参数 TECHNICAL DATA

机型 Machine type	缝制范围 Sewing Range	最高转速 Max Speed	针距 Needle gauge	机针 Machine needle	旋梭 Hook	气压 Pressure	抬压脚高度 Foot lifting height	Y送料方式 Y feeding mode	X送料方式 X feeding mode	台板展开尺寸 Table open size	包装尺寸 Package size	净重 net weight
GT-K9W-95130	890X1300	3600	0.1-20	DPX5 7-24#	2倍梭	0.4-0.6Mpa	20	同步带	同步带	2300X2200	1820X1150X1320 加130W激光长2120	471
GT-K9W-95150	890X1500	3600	0.1-20	DPX5 7-24#	2倍梭	0.4-0.6Mpa	20	同步带	同步带	2300X3200	1820X1150X1320 加130W激光长2120	492
GT-K9W-95160	890X1600	3600	0.1-20	DPX5 7-24#	2倍梭	0.4-0.6Mpa	20	同步带	同步带	2300X3200	1820X1150X1320 加130W激光长2120	498
GT-K9W-95180	890X1800	3600	0.1-20	DPX5 7-24#	2倍梭	0.4-0.6Mpa	20	同步带	同步带	2300X3700	1820X1150X1320 加130W激光长2120	515
GT-K9W-95200	890X2000	3600	0.1-20	DPX5 7-24#	2倍梭	0.4-0.6Mpa	20	同步带	同步带	2300X4100	1820X1150X1320 加130W激光长2120	540
GT-K9W-95240	890X2400	3600	0.1-20	DPX5 7-24#	2倍梭	0.4-0.6Mpa	20	同步带	同步带	2300X4800	1820X1150X1320 加130W激光长2120	570

Forward Stitch
Replacing
Rotary
Head

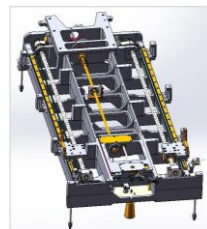
正向线迹 代替旋转头
Forward Stitch, Replacing Rotary Head



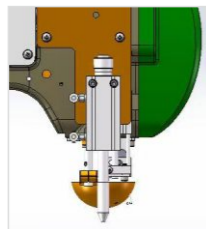
GT-K10W

无鸟巢模板机
Anti Bird Nest Template Machine

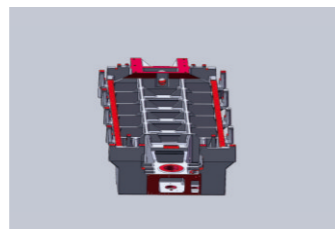
特点 Features



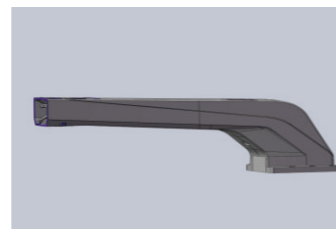
Y向双丝杆传动
Y direction double screw drive



设计画笔
Design brushes



一体铸造大底座
Integrated casting large base



一体铸造机臂
Integrated casting machine arm

性能参数 TECHNICAL DATA

机型 Machine type	缝制范围 Sewing Range	最高转速 Max Speed	针距 Needle gauge	机针 Machine needle	旋梭 Hook	气压 Pressure	抬压脚高度 Foot lifting height	Y送料方式 Y feeding mode	X送料方式 X feeding mode	台板展开尺寸 Table open size	包装尺寸 Package size	净重 net weight
GT-K10W-105130	900X1300	3600	0.1-20	DPX5 7-24#	2倍梭	0.4-0.6Mpa	20	双丝杆	丝杆、同步带	2500X2200	1960X1150X1320 加130W激光长2120	550
GT-K10W-105150	900X1500	3600	0.1-20	DPX5 7-24#	2倍梭	0.4-0.6Mpa	20	双丝杆	丝杆、同步带	2500X3200	1960X1150X1320 加130W激光长2120	571
GT-K10W-105160	900X1600	3600	0.1-20	DPX5 7-24#	2倍梭	0.4-0.6Mpa	20	双丝杆	丝杆、同步带	2500X3200	1960X1150X1320 加130W激光长2120	577
GT-K10W-105180	900X1800	3600	0.1-20	DPX5 7-24#	2倍梭	0.4-0.6Mpa	20	双丝杆	丝杆、同步带	2500X3700	1960X1150X1320 加130W激光长2120	594
GT-K10W-105200	900X2000	3600	0.1-20	DPX5 7-24#	2倍梭	0.4-0.6Mpa	20	双丝杆	丝杆、同步带	2500X4100	1960X1150X1320 加130W激光长2120	619
GT-K10W-105240	900X2400	3600	0.1-20	DPX5 7-24#	2倍梭	0.4-0.6Mpa	20	双丝杆	丝杆、同步带	2500X4800	1960X1150X1320 加130W激光长2120	649

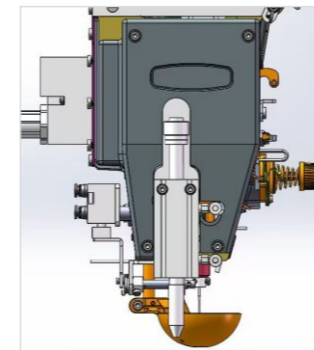
Bigger stroke,
meet different
processing
requirements

更大的行程，满足不同的工艺需求
Bigger stroke, meet different processing requirements



GT-N105W

无鸟巢旋转模板机
Anti Bird Nest Template Machine



设计画笔可以轻松转换自动化工作所需的开模槽线迹、缝纫线迹、画位线迹等工作轨迹。
Design Pen Easily converts and automates work paths for mold slot lines, stitching paths, and positioning lines.



吸风：1500W风机功率，300X500吸风面积，适应各种面料、工艺。
Suction: 1500W motor power, 300x500mm suction area, adaptable to various fabrics and processes.

性能参数 TECHNICAL DATA

机型 Machine type	缝制范围 Sewing Range	最高转速 Max Speed	针距 Needle gauge	机针 Machine needle	旋梭 Hook	气压 Pressure	抬压脚高度 Foot lifting height	Y送料方式 Y feeding mode	X送料方式 X feeding mode	台板展开尺寸 Table open size	包装尺寸 Package size	净重 net weight
GT-N105130W	1000X1300	3800	0.1-20	DPX5 7-24#	2倍梭	0.4-0.6Mpa	20	同步带	同步带	2540X2200	1960X1150X1740 加130W激光长2180	493
GT-N105150W	1000X1500	3800	0.1-20	DPX5 7-24#	2倍梭	0.4-0.6Mpa	20	同步带	同步带	2540X3200	1960X1150X1740 加130W激光长2180	514
GT-N105160W	1000X1600	3800	0.1-20	DPX5 7-24#	2倍梭	0.4-0.6Mpa	20	同步带	同步带	2540X3700	1960X1150X1740 加130W激光长2180	521
GT-N105180W	1000X1800	3800	0.1-20	DPX5 7-24#	2倍梭	0.4-0.6Mpa	20	同步带	同步带	2540X3700	1960X1150X1740 加130W激光长2180	537
GT-N105200W	1000X2000	3800	0.1-20	DPX5 7-24#	2倍梭	0.4-0.6Mpa	20	同步带	同步带	2540X4100	1960X1150X1740 加130W激光长2180	562
GT-N105240W	1000X2400	3800	0.1-20	DPX5 7-24#	2倍梭	0.4-0.6Mpa	20	同步带	同步带	2540X4800	1960X1150X1740 加130W激光长2180	592

Faster Speed,
Reduced Vibration,
Quieter
Operation



超高速模板机

Ultra-High Speed Template Machine

速度更快，振动更小，声音更轻

Faster Speed, Reduced Vibration, Quieter Operation

GT-N95W

无鸟巢旋转模板机

Anti Bird Nest Template Machine

智能供油系统

Intelligent oil-supply system

根据缝速控制供油量 保证旋梭稳定工作

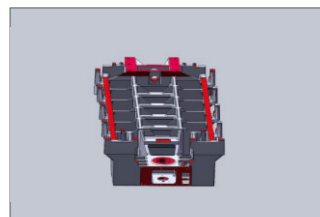
The oil supply to hook can be adjusted automatically with different sewing speed. Ensure stable shuttle operation

机头360° 旋转缝

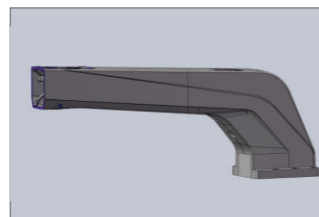
360° degree rotary sewing

360度旋转机头缝纫, 实现任意角度完美线迹

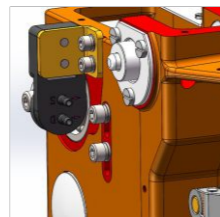
Rotate 360° machine head sewing, achieve perfect stitch at any angle



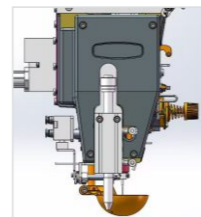
一体铸造大底座
Integrated casting large base



一体铸造机臂
Integrated casting machine arm



智能供油系统
Intelligent oil-supply system



设计画笔
Design brushes



机头360° 旋转缝
360° degree rotary sewing

产品优势 Advantage

- 一体铸造机臂、一体铸造大底座(非焊接)**
Monoblock Cast Arm & Base (Non-Welded Structure)
- 360度旋转，机头和底座同步缝纫, 实现任意角度完美线迹**
360° Rotation with Synchronized Head-Base Sewing Ensures perfect stitches at any angle.
- 丝光线与棉线随意切换，线路稳定**
Flexible Switch Between Silk & Cotton Threads Maintains consistent thread tension.
- 头部无油设计**
Oil-Free Head Design Eliminates fabric contamination and reduces maintenance.
- 主要件采用进口部件**
Core Components Imported Ensures premium reliability and performance.
- 旋梭标准: 两倍大旋梭**
Rotary Hook Standard: Double-Sized Hook Enhances thread capacity and durability.
- 采用圆刀剪线结构, 步进电机独立驱动, 剪线更稳定**
Circular Knife Cutting System with Independent Stepper Motor Drive Achieves more stable and precise thread trimming.
- 头部采用微油结构设计, 针杆使用DLC经过耐磨表面特殊处理**
Micro-Oil Needle Bar Design with DLC Wear-Resistant Coating Extends lifespan and reduces friction.
- 超强数控系统; 智能+智慧+经验编出新的指令**
Advanced CNC System Integrates intelligence, wisdom, and experience to generate innovative commands.
- 智能“上位M系统软件”, 实现任何图案的处理, 可任意编辑指令输出**
Smart "Upper M System Software" Processes any pattern and enables customizable command editing.
- 可直接在触摸屏上进行图案的采集输入和修改**
Direct Pattern Import & Editing via Touchscreen Streamlines design workflow.
- 显示屏操作方式: 按键+全液晶触摸显示屏**
Display Operation: Physical Keys + Full LCD Touchscreen Combines tactile feedback and intuitive control.
- 程序输入方式: U盘或无线数据导入**
Program Input: USB or Wireless Data Transfer Supports flexible data loading.
- 电子标签射频识别功能, 模板识别数量不限制**
RFID Electronic Tag Recognition Unlimited template identification capacity.
- 具有可搭载左右双/单边自动辅助送料机构装置**
Configurable Left/Right Single or Dual Auto-Assisted Feeding Mechanism Adapts to diverse material handling needs.
- 具有可搭载无线通讯功能, 配置无线路由器, 能进行远程软件升级花样程序传输和参数设置**
Wireless Communication Ready Includes Wi-Fi router for remote software upgrades, pattern transfers, and parameter settings.
- 具有可搭载可选定制物联网功能, 可以有线或无线的方式与生产管理系统进行远程数据交互**
Optional IoT Customization Enables wired or wireless remote data exchange with production management systems.

性能参数 TECHNICAL DATA

机型 Machine type	缝制范围 Sewing Range	最高转速 Max Speed	针距 Needle gauge	机针 Machine needle	旋梭 Hook	气压 Pressure	抬压脚高度 Foot lifting height	Y送料方式 Y feeding mode	X送料方式 X feeding mode	台板展开尺寸 Table open size	包装尺寸 Package size	净重 net weight
GT-N95130W	900X1300	3800	0.1-20	DPX5 7-24#	2倍梭	0.4-0.6Mpa	20	单丝杆	丝杆、同步带	2400X2200	1960X1150X1740 加130W激光长2180	636
GT-N95150W	900X1500	3800	0.1-20	DPX5 7-24#	2倍梭	0.4-0.6Mpa	20	单丝杆	丝杆、同步带	2400X3200	1960X1150X1740 加130W激光长2180	657
GT-N95160W	900X1600	3800	0.1-20	DPX5 7-24#	2倍梭	0.4-0.6Mpa	20	单丝杆	丝杆、同步带	2400X3200	1960X1150X1740 加130W激光长2180	663
GT-N95180W	900X1800	3800	0.1-20	DPX5 7-24#	2倍梭	0.4-0.6Mpa	20	单丝杆	丝杆、同步带	2400X3700	1960X1150X1740 加130W激光长2180	680
GT-N95200W	900X2000	3800	0.1-20	DPX5 7-24#	2倍梭	0.4-0.6Mpa	20	单丝杆	丝杆、同步带	2400X4100	1960X1150X1740 加130W激光长2180	705
GT-N95240W	900X2400	3800	0.1-20	DPX5 7-24#	2倍梭	0.4-0.6Mpa	20	单丝杆	丝杆、同步带	2400X4800	1960X1150X1740 加130W激光长2180	735

BAOYU[®]

Engineere
Mechanica
Structur



GT-N95RW

无鸟巢旋转升降模板机
Anti bird nest rotary lifting head template machine

适应面广，
特别适合厚料、大行程、有阻碍物等缝纫工艺
Versatility Adapted
Ideal for thick materials, large-scale patterns, and obstacle-avoidance sewing processes.

科学的机械结构
Engineered Mechanical Structure

强大的控制系统
Robust Control System



升降前 Before lifting up/down



升降后 After rising and falling

性能参数 TECHNICAL DATA

机型 Machine type	缝制范围 Sewing Range	最高转速 Max Speed	针距 Needle gauge	机针 Machine needle	旋梭 Hook	气压 Pressure	抬压脚高度 Foot lifting height	Y送料方式 Y feeding mode	X送料方式 X feeding mode	台板展开尺寸 Table open size	包装尺寸 Package size	净重 net weight
GT-N95130W	900X1300	3800	0.1-20	DPX5 7-24#	2倍梭	0.4-0.6Mpa	20	双丝杆	丝杆、同步带	2400X2200	1960X1150X1740 加130W激光长2180	636
GT-N95150W	900X1500	3800	0.1-20	DPX5 7-24#	2倍梭	0.4-0.6Mpa	20	双丝杆	丝杆、同步带	2400X3200	1960X1150X1740 加130W激光长2180	657
GT-N95160W	900X1600	3800	0.1-20	DPX5 7-24#	2倍梭	0.4-0.6Mpa	20	双丝杆	丝杆、同步带	2400X3200	1960X1150X1740 加130W激光长2180	663
GT-N95180W	900X1800	3800	0.1-20	DPX5 7-24#	2倍梭	0.4-0.6Mpa	20	双丝杆	丝杆、同步带	2400X3700	1960X1150X1740 加130W激光长2180	680
GT-N95200W	900X2000	3800	0.1-20	DPX5 7-24#	2倍梭	0.4-0.6Mpa	20	双丝杆	丝杆、同步带	2400X4100	1960X1150X1740 加130W激光长2180	705
GT-N95240W	900X2400	3800	0.1-20	DPX5 7-24#	2倍梭	0.4-0.6Mpa	20	双丝杆	丝杆、同步带	2400X4800	1960X1150X1740 加130W激光长2180	735

Compact
Body,
Advanced
Intelligenc



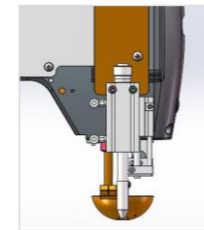
GT-M45

工艺模板机
Process Template Machine

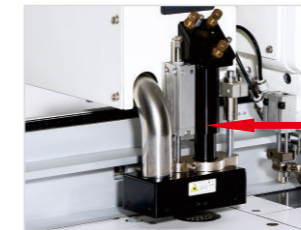
小机台，大智慧
Compact Body, Advanced Intelligence

科学的机械结构
Engineered Mechanical Structure

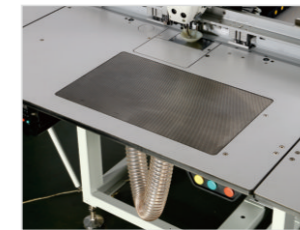
强大的控制系统
Robust Control System



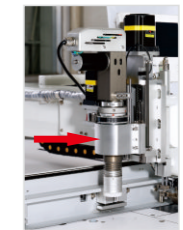
设计画笔
Design brushes



激光切割装置
Laser cutting device



吸风：1500W风机功率，300X500
吸风面积，适应各种面料、工艺。
Suction: 1500W motor power, 300x500mm
suction area, adaptable to various fabrics
and processes.



震动刀：
适用于不能用激光切割的工艺。
Oscillating Knife:
Ideal for applications
where laser cutting is
not suitable

性能参数 TECHNICAL DATA

机型 Machine type	缝制范围 Sewing Range	最高转速 Max Speed	针距 Needle gauge	机针 Machine needle	旋梭 Hook	气压 Pressure	抬压脚高度 Foot lifting height	Y送料方式 Y feeding mode	X送料方式 X feeding mode	台板展开尺寸 Table open size	包装尺寸 Package size	净重 net weight
GT-M45100	450X1000	3600	0.1-20	DPX5 7-24#	1.6倍梭	0.4-0.6Mpa	16	同步带	同步带	1894X1650	1580X1150X1320 加100W激光长1960 加130W激光长2340	240
GT-M45120(大豪)	450X1200	3600	0.1-20	DPX5 7-24#	1.6倍梭	0.4-0.6Mpa	16	同步带	同步带	1894X2400	1580X1150X1320 加100W激光长1960 加130W激光长2340	277

BAOYU[®]

Compact
Body,
Advanced
Intelligence



GT-M2850I

工艺模板机
Process Template Machine

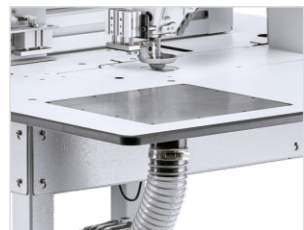
小机台，大智慧
Compact Body, Advanced Intelligence

科学的机械结构
Engineered Mechanical Structure

强大的控制系统
Robust Control System

吸风：1500W风机功率，300X500 吸风面积，适应各种面料、工艺。
Suction: 1500W motor power, 300x500mm suction area, adaptable to various fabrics and processes.

标配1500W大功率吸风系统
Standard equipped with a 1500W high-power suction system



加大吸风面积300mmX450mm
Increase the suction area to 300mm x 450mm

● 性能参数 TECHNICAL DATA

机型 Machine type	缝制范围 Sewing Range	最高转速 Max Speed	针距 Needle gauge	机针 Machine needle	旋梭 Hook	气压 Pressure	抬压脚高度 Foot lifting height	Y送料方式 Y feeding mode	X送料方式 X feeding mode	台板展开尺寸 Table open size	包装尺寸 Package size	净重 net weight
GT-M2850	280X500	3600	0.1-20	DPX5 7-24#	1.6倍梭	0.4-0.6Mpa	16	同步带	同步带	1365X1085	1520X1150X1260	240

The Ultimate
Solution for Shirt
Sleeve Plackets
& Polo Hem
Plackets



GT-M3-XC

袖衩机
Placket Machine

衬衫袖衩、POLO衫脚衩生产神器
The Ultimate Solution for Shirt Sleeve Plackets & Polo Hem Plackets

标配大功率吸风系统
Standard High-Power Suction System

全新中压脚结构,声音轻
New Presser Foot Mechanism, lower noise.

创新六边型吸风模块,免烫面料更好用
Innovative Hexagon Suction Module, better for non-iron materials.



X、Y丝杆传动精准、
高效
Double-screw transmission is
precise and efficient.



升级全新脚踏 更加快捷
Upgrade to the new pedal for greater speed and
convenience

● 性能参数 TECHNICAL DATA

机型 Machine type	最高转速 Max Speed	针距 Needle gauge	机针 Machine needle	旋梭 Hook	气压 Pressure	抬压脚高度 Foot lifting height	Y送料方式 Y feeding mode	X送料方式 X feeding mode	台板展开尺寸 Table open size	包装尺寸 Package size	净重 net weight
GT-M3-XC	3600	0.5-8	DPX5 7-12#	1.6倍梭	0.4-0.6Mpa	16	丝杆	丝杆	1250X1150	1520X1150X1260	208.5

局域网 Local Area Network

设备监管
Data Management

质量管理
Quality Management

数据管理
Equipment Supervision

远程管控
Remote Management & Control

生产管理
Production Management



物联软件
IoT Software
设备联网
Equipment Networking
大数据管理系统
Big Data Management System
远程管控
Remote Monitoring & Control

INTELLIGENT TEMPLATE MACHINE PROCESS INTRODUCTION

智能模板机工艺介绍

模板机几乎涵盖了所有需要复杂缝纫图案的行业：
Template machines are widely used across industries requiring complex sewing patterns:

●服装行业： APPAREL INDUSTRY:

羽绒服、棉服上的复杂绗线（菱形、波浪形等）；
Decorative quilting [diamond, wave patterns, etc.] on down jackets and cotton garments;

衬衫、牛仔裤上的口袋花、章仔；
Pocket designs and appliqués on shirts and jeans;

T恤、Polo衫上的Logo刺绣效果。
Logo embroidery on T-shirts and Polo shirts.

●家居纺织行业： HOME TEXTILES INDUSTRY:

被子、床垫、窗帘、沙发套上的缝制和装饰性缝纫图案。
Stitching and decorative patterns on quilts, mattresses, curtains, and sofa covers.

●鞋帽箱包行业： FOOTWEAR, HEADWEAR & LUGGAGE INDUSTRY:

运动鞋、皮鞋的鞋面缝制和装饰线迹；
Uppers stitching and decorative seams on sports shoes and leather footwear;

背包、手提包上的品牌标识、花纹及缝制；
Brand logos, patterns, and stitching on backpacks and handbags;

帽子的造型线等。
Structural seams on hats.

●汽车工业： AUTOMOTIVE INDUSTRY:

汽车座椅套、头枕、安全气囊的缝制。
Stitching for car seat covers, headrests, and airbags.

●特种行业： SPECIALIZED INDUSTRIES:

医疗防护服、户外帐篷、玩具、婴儿车、体育用品等。
Medical protective clothing, outdoor tents, toys, Baby carriage, sporting goods, etc.

SUITS SHIRTS



西装 SUITS

西装—上领、合肩、挂面、开袋、袋盖、公主缝拼接、后背加省、后中拼接加切角、腰绳。
Suit - Upper Collar, Shoulder Seaming, Facing, Pocket Opening, Pocket Flap, Princess Seam Joining, Back Darts, Center Back Seaming with Corner Cut, Waist Cord.
西裤—上腰、收省、开月牙袋、开门襟、门襟上拉链
Trousers - Waistband Attachment, Dart Taking-in, Crescent Pocket Cutting, Fly Front Opening, Zipper Installation on Fly Front



衬衫 SHIRTS

衬衫—上级领、下级领、做蝴蝶结、免烫口袋、上袖口、拼缝、合片。
Shirt - Upper Collar, Lower Collar, Bow Tie Making, Wrinkle-Resistant Pocket, Cuff Attachment, Seam Joining, Panel Assembling.

BAOYU[®]

SWEATSHIRTS

JACKETS

& DRESSES

& WORKWEAR



卫衣、衣裙
SWEATSHIRTS & DRESSES

卫衣—上领、合帽子、开一字门筒、鼠袋（免烫）、前门襟、打折、卫裤开袋、装饰条压明
Hoodie & Sweatpants - Collar Attachment, Hood Assembly, Straight Placket Opening, Wrinkle-Resistant Kangaroo Pocket, Front Placket, Gathering, Sweatpants Pocket Cutting, Decorative Strip Topstitching

夹克、工装
JACKETS & WORKWEAR

夹克—帽领绗线、上袖子、上无贴布拉链、钉标、龟背、装饰织带、开袋、贴袋、袋盖、肩伴
Jacket - Hooded Collar Quilting, Sleeve Attachment, Zipper Installation Without Binding, Label Affixing, Turtle Back Panel, Decorative Webbing, Pocket Cutting, Patch Pocket, Pocket Flap, Shoulder Tab
工装—反光条、魔术贴、贴袋（免烫）、袋盖（免烫）
Workwear - Reflective Tape, Hook-and-Loop Fastener (Velcro), Wrinkle-Resistant Patch Pocket, Wrinkle-Resistant Pocket Flap

BAOYU[®]

DOWN JACKETS & COTTON COATS



羽绒服、棉衣 DOWN JACKETS & COTTON COATS

羽绒服—合帽子、上领、无贴布拉链口袋、明袋（免烫）、门襟、钉标
Down Jacket - Hood Assembly, Collar Attachment, Zipper Pocket Without Binding, Wrinkle-Resistant Exposed Pocket, Placket, Label Affixing

毛呢大衣—上领、挂面、上袖、毛呢贴明袋、腰绳、钉标
Wool Coat - Collar Attachment, Facing, Sleeve Attachment, Wool Exposed Patch Pocket, Waist Cord, Label Affixing

LUGGAGE & SEATS



箱包、座椅 LUGGAGE & SEATS

箱包—手提绳、拉链、绗线、礼盒缝制
Luggage & Bags - Hand Strap, Zipper, Quilting Stitch, Gift Box Sewing

座椅—上织带、拼缝、绗线、坐垫捆绳、开袋、明线口袋、抱枕缝制
Seat - Webbing Attachment, Seam Joining, Quilting Stitch, Cushion Tying Cord, Pocket Cutting, Topstitch Pocket, Throw Pillow Sewing

BAOYU[®]

PILLOWS, HATS, PROTECTIVE

FOOTWEAR

CLOTHING

GLOVES

OUTDOOR

SPORTS

SPORTS



枕头、帽子、鞋子、手套、玩具
PILLOWS, HATS, FOOTWEAR, GLOVES, TOYS

鞋、帽—鞋子拼缝、帽子拼缝、印花、帽檐、抱枕绗线加捆绳
Shoes & Hats - Shoe Seam Joining, Hat Seam Joining, Printing, Hat Brim, Throw Pillow Quilting with Tying Cord
手套—拼缝、合缝、足球合片、各种毛绒玩具缝制
Gloves - Seam Joining, Seam Closing, Soccer Ball Panel Assembling, Sewing of Various Plush Toys



防护服、户外帐篷、体育用品
PROTECTIVE CLOTHING, OUTDOOR TENTS, SPORTING GOODS

防护服—防护服绗线、腰绳隧道、帐篷绗线、上拉链、开窗口、摇篮缝制、野餐垫缝制
Protective Clothing - Protective Clothing Quilting, Waist Cord Tunnel, Tent Quilting, Zipper Installation, Window Cutting, Cradle Sewing, Picnic Mat Sewing